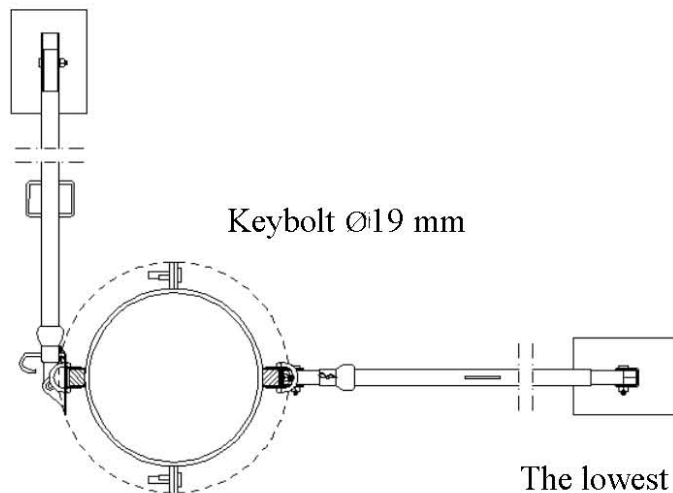


## Installation of pillar form



For installation of pillar form you need 2 pcs of Struts Rods installed and anchored in 90 degrees angle.

The lowest horizontal flange can be anchored with bolts or with plywood board with round hole dia Ø 200 mm bigger than the pillar.

Do not forget to use Form Oil and Clean Up the form surface between every cast.

